

Disability and Impairment

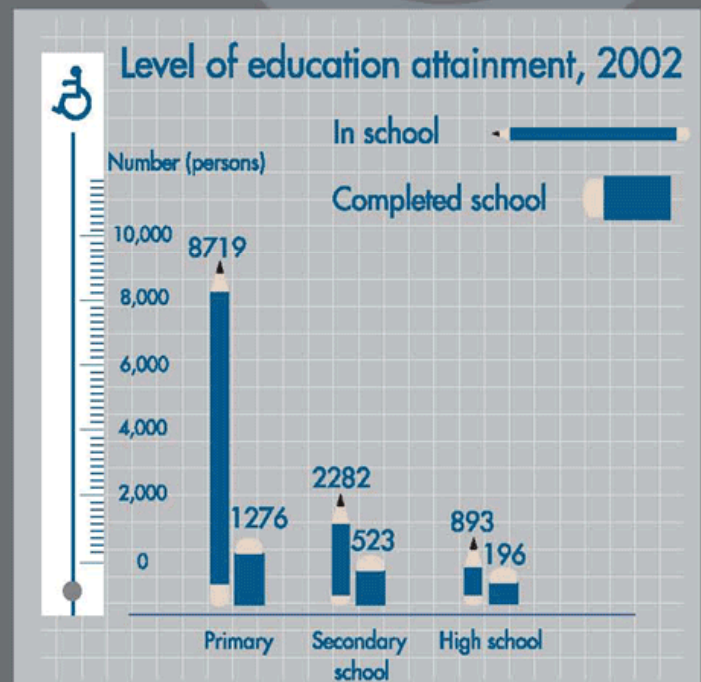
In 2003, there were 1.1 million disabled people in Thailand, most of whom lacked access to social assistance and services

Even though society is showing more concern for disabled people than it did in the past, many disabled people still lack the chance to work and study, and lack access to services that would enable them to live normal lives.

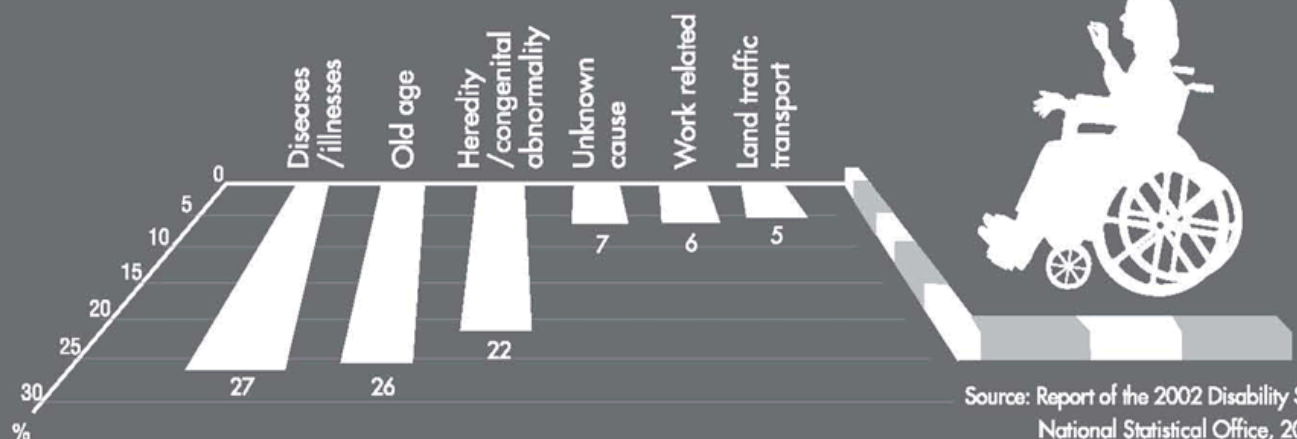
Health problems and abnormalities, such as obesity, paralysis, osteoporosis, blindness, and deafness, together affect the daily lives of more than 4.3 million Thais who have chronic health problems lasting at least six months. Of this number, 1.1 million are disabled. One quarter of disabled people has it since birth. Many people's lives are improved through the use of devices such as walking sticks, glasses, and hearing aids, but one million people still lack these things.

For those who were not disabled at birth, the most common causes of disability are disease and old age. Traffic accidents and work accidents are the next most important causes.

Many disabled people lack access to disability services and are not able to participate in society. This is apparent from the fact that, of the 4 million Thais with chronic illnesses, only 1,995 have finished high school. Three-quarters have no education or less than primary education. Altogether, only 4,311 disabled people are currently employed. Those who are employed earn only two thirds as much as people without disabilities. Many disabled people fall below the poverty line.



Source: Education statistics of Thailand, Ministry of Education, 2002



Source: Report of the 2002 Disability Survey, National Statistical Office, 2002

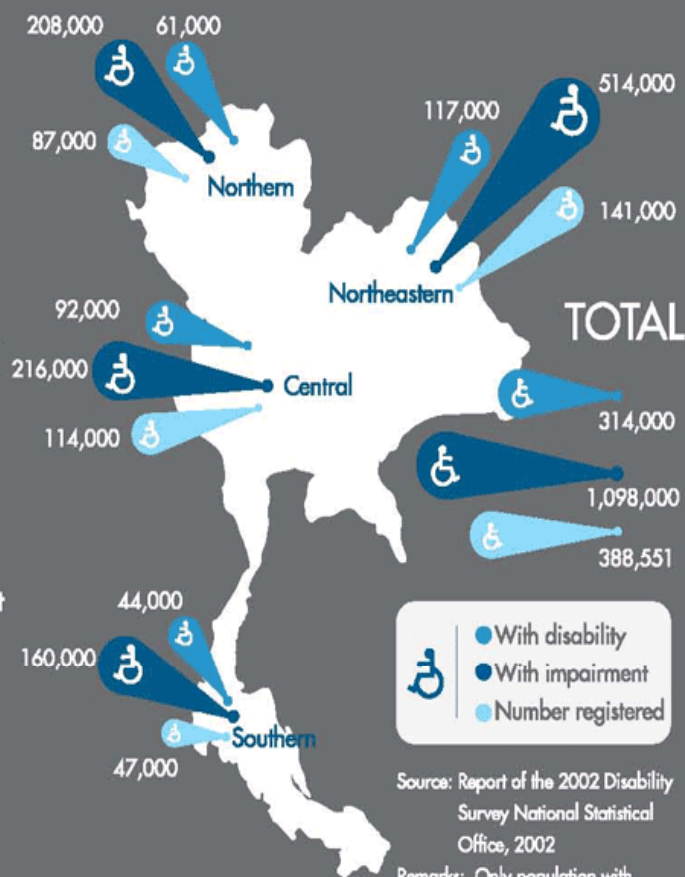
People with handicapped by causes, 2003

Characteristics of Impairment and average onset ages

Characteristics	%	Average onset age
Emotion	6.7	43
Dexterity	7.2	53
Hearing	9.8	56
Communicating	9.9	66
Recognition	14.9	63
Seeing	21.8	61
Mobility	22.7	60
Standing (20 min.)	25.3	60
Walking upstairs (10-14 steps)	28.1	60

Source: Report of the 2002 Disability Survey, National Statistical Office, 2002
 * Figures obtained from 2.9 millions people having illness for 6 months and over

Numbers of disabled people, people with impairment and number of those registered



Source: Report of the 2002 Disability Survey National Statistical Office, 2002

Remarks: Only population with handicap level 4 & 5 are eligible to register

People with chronic illnesses (aged 13 up)
 5.9% (2.9 million)

Having disability or not

11% yes
 (3 thousand)
 89% none
 (2.6 million)

Using aid equipment

15.6% using
 4.5 thousand

84.0% Not using
 2.5 million

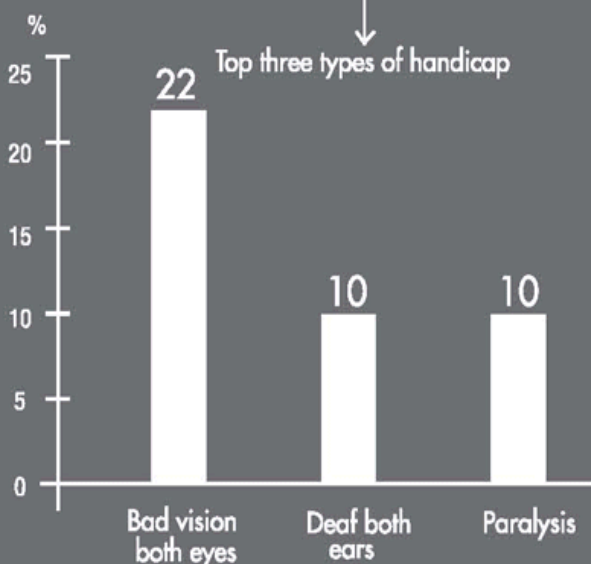
Impairment refers to those who are not able to conduct any daily activities by self or need to be assisted by someone or could do by self with difficulty such as taking a bath, eating, washing face, brushing teeth, dressing, urinating including cleaning after.

51% do not need to use
 1.3 million

42% do not have
 1 million

7% have but not use
 1.8 thousand

People with disabilities (from birth onwards)
 1.1 millions (1.8%)



Source: Report of the 2002 Disability Survey, National Statistical Office, 2002